

HLA-DMB Antibody (Center)
Affinity Purified Rabbit Polyclonal Antibody (Pab)
Catalog # AP16546c**Specification**

HLA-DMB Antibody (Center) - Product Information

Application	WB,E
Primary Accession	P28068
Other Accession	NP_002109.1
Reactivity	Human
Host	Rabbit
Clonality	Polyclonal
Isotype	Rabbit IgG
Calculated MW	28931
Antigen Region	104-133

HLA-DMB Antibody (Center) - Additional Information**Gene ID** 3109**Other Names**

HLA class II histocompatibility antigen, DM beta chain, MHC class II antigen DMB, Really interesting new gene 7 protein, HLA-DMB, DMB, RING7

Target/Specificity

This HLA-DMB antibody is generated from rabbits immunized with a KLH conjugated synthetic peptide between 104-133 amino acids from the Central region of human HLA-DMB.

Dilution

WB~~1:1000

E~~Use at an assay dependent concentration.

Format

Purified polyclonal antibody supplied in PBS with 0.09% (W/V) sodium azide. This antibody is purified through a protein A column, followed by peptide affinity purification.

Storage

Maintain refrigerated at 2-8°C for up to 2 weeks. For long term storage store at -20°C in small aliquots to prevent freeze-thaw cycles.

Precautions

HLA-DMB Antibody (Center) is for research use only and not for use in diagnostic or therapeutic procedures.

HLA-DMB Antibody (Center) - Protein Information**Name** HLA-DMB

Synonyms DMB, RING7

Function Plays a critical role in catalyzing the release of class II- associated invariant chain peptide (CLIP) from newly synthesized MHC class II molecules and freeing the peptide binding site for acquisition of antigenic peptides. In B-cells, the interaction between HLA-DM and MHC class II molecules is regulated by HLA-DO.

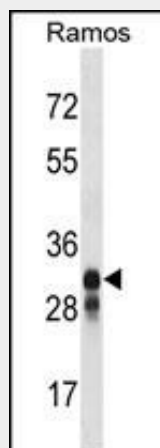
Cellular Location

Late endosome membrane; Single-pass type I membrane protein. Lysosome membrane; Single-pass type I membrane protein. Note=Localizes to late endocytic compartment. Associates with lysosome membranes

HLA-DMB Antibody (Center) - Protocols

Provided below are standard protocols that you may find useful for product applications.

- [Western Blot](#)
- [Blocking Peptides](#)
- [Dot Blot](#)
- [Immunohistochemistry](#)
- [Immunofluorescence](#)
- [Immunoprecipitation](#)
- [Flow Cytometry](#)
- [Cell Culture](#)

HLA-DMB Antibody (Center) - Images

HLA-DMB Antibody (Center) (Cat. #AP16546c) western blot analysis in Ramos cell line lysates (35ug/lane). This demonstrates the HLA-DMB antibody detected the HLA-DMB protein (arrow).

HLA-DMB Antibody (Center) - Background

HLA-DMB belongs to the HLA class II beta chain paralogues. This class II molecule is a heterodimer consisting of an alpha (DMA) and a beta (DMB) chain, both anchored in the membrane. It is located in intracellular vesicles. DM plays a central role in the peptide loading of MHC class II molecules by helping to release the CLIP (class II-associated invariant chain peptide) molecule from the peptide binding site. Class II molecules are expressed in antigen presenting cells (APC: B lymphocytes, dendritic cells,

macrophages). The beta chain is approximately 26-28 kDa and its gene contains 6 exons. Exon one encodes the leader peptide, exons 2 and 3 encode the two extracellular domains, exon 4 encodes the transmembrane domain and exon 5 encodes the cytoplasmic tail.

HLA-DMB Antibody (Center) - References

Rinderknecht, C.H., et al. Immunology 131(1):18-32(2010)
Bailey, S.D., et al. Diabetes Care (2010) In press :
Davila, S., et al. Genes Immun. 11(3):232-238(2010)
Ferrante, A., et al. J. Immunol. 184(3):1153-1158(2010)
Talmud, P.J., et al. Am. J. Hum. Genet. 85(5):628-642(2009)